



INSTALLATION INSTRUCTIONS

Backfilling Unused Collars

If a Snap Cast-in collar has been cast into a slab and is no longer required, it is important to backfill the collar to ensure that the Fire Resistance Level (FRL) of the concrete slab is not affected by the unused penetration.

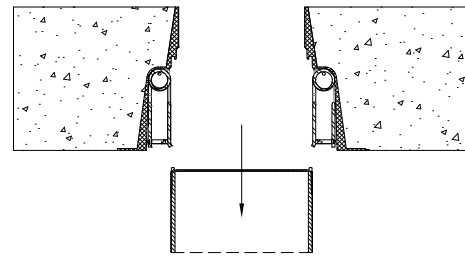
Materials Required

- 0.4mm galvanized steel plate 20mm larger than the base flange of the collar
- Steel concrete screws
- Concrete

The following method was used in BRANZ Test Report FR5670 (Specimen 20), available on the SNAP Fire Systems Website: www.snapcollars.com.au
The test was conducted on a H100S collar - to use this method with other collar sizes please consult with the relevant stakeholders.

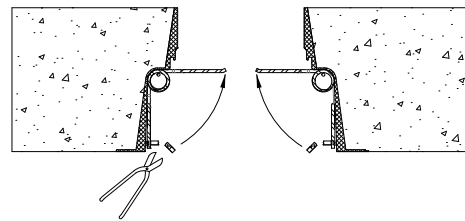
1

Pull the intumescent and mesh lining (grey material on the inside of the collar) out of the collar and discard.



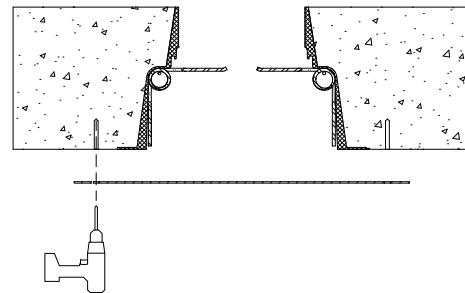
2

Cut the plastic fuselinks that are holding the arms of the springs together. **Note:** The springs and fuselinks will release with a great amount of force so be sure fingers are clear of the spring arm when it is released.



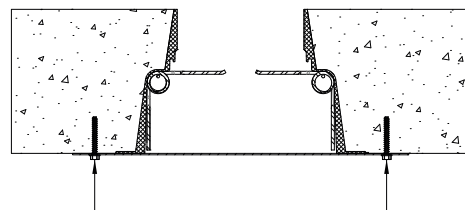
3

Place galvanized steel plate centrally over the collar and drill at least four evenly spaced holes through the plate into the concrete slab.



4

Secure the galvanized steel plate to the underside of the slab with steel concrete screws.



5

Completely fill the collar from above with concrete and finish flush with the top of the slab.

