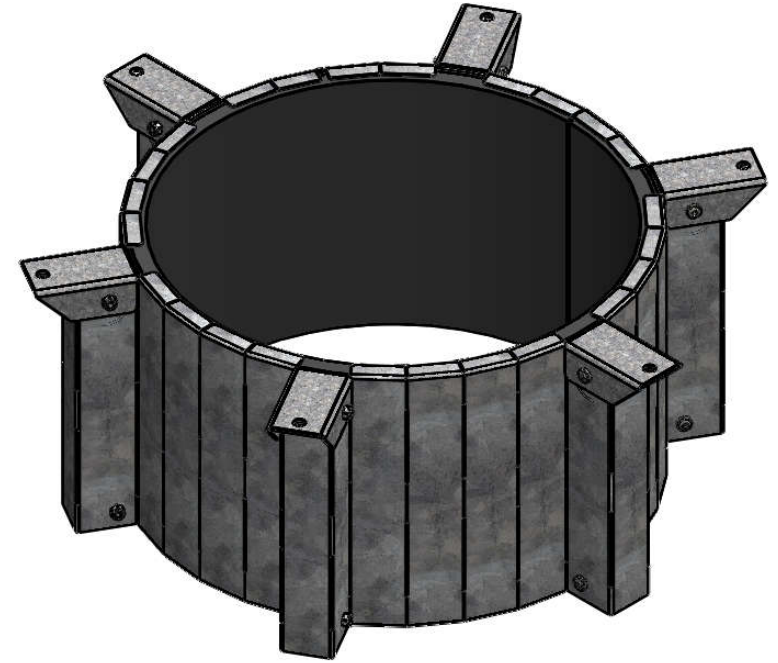
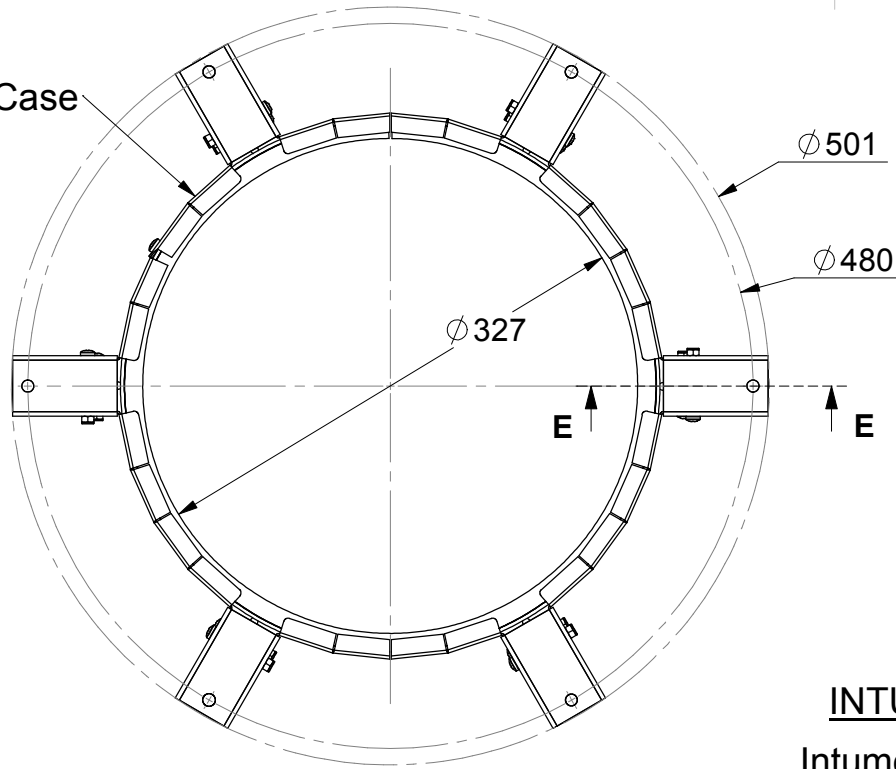


0.95 Steel Case



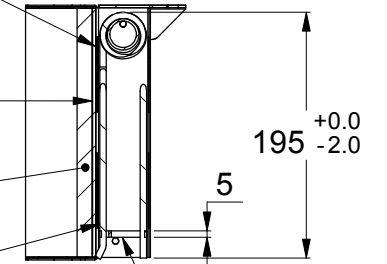
INTUMESH (PAT PENDING)

Intumescent-A
1111 x 197 x 2.5mm Thick ± 0.5 mm

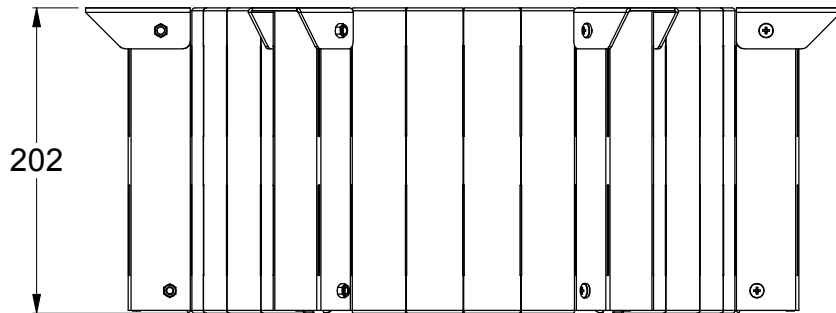
316 S/S Mesh
1102 x 192mm
Wire $\phi 0.15$ mm 30 sq in

Intumescent-B
1064 x 197 x 12mm Thick ± 0.5 mm

6 x 304 Stainless Steel
Springs
Wire $\phi 5$ mm



SECTION E-E Nylon Fuse Link (Black)



	PRODUCT CODE:	
	HP315R	
DWG NO:	DATE:	
HP315R- T	16/08/2017	A4

UNLESS OTHERWISE SPECIFIED:
DIMENSIONS ARE IN MILLIMETERS
DO NOT SCALE DRAWING