

Installation instructions

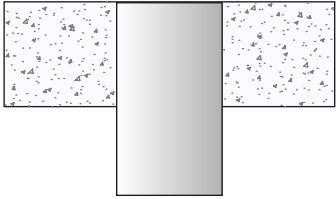
Floor Slab Installation



SNAP Fire Systems Pty Ltd
 Building A, 1343 Wynnnum Road
 Tingalpa QLD 4178
 Phone 1300 76 46 26
 Website www.snapcollars.com.au

Product
SNAP 'R' Retro Fit Collars:
 LP50 - LP100R
 HP100R - HP250R
 32R - 110R

Situation
**Retrofit to concrete slab:
 Floorwaste and stack**



1

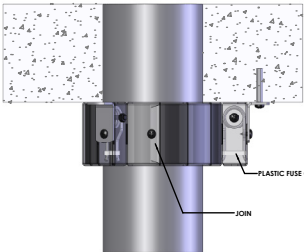
It is very important that the collar and intumescent are fitted the correct way up. Preferably the collar should be fitted before the pipe is fitted; this will obviate the need to fit the collar round the pipe, however this can easily be done provided the intumescent and mesh are replaced correctly. The folded mesh creates a pouch for the expanded intumescent preventing it from falling out of the collar.



2

1. For HP and LP collars, the collar must have the tails of the springs and the plastic fuse clip holding them together on the underside of the collar.
2. The minimum size of the sleeve anchors to be used is 6.5 x 35 long and they must be all steel. Plastic or aluminium pin anchors must NOT be used.

IMPORTANT The intumescent sleeve must not be altered or tampered with.



3

- Approved fixings:
- Steel Wedge Anchor 6x35mm
 - 6.5x40mm Mechanical Anchor
 - Mushroom Head Spikes
 - Concrete Screws

Installation instructions

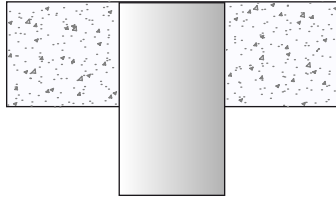
Floor Slab Installation



SNAP Fire Systems Pty Ltd
 Building A, 1343 Wynnnum Road
 Tingalpa QLD 4178
 Phone 1300 76 46 26
 Website www.snapcollars.com.au

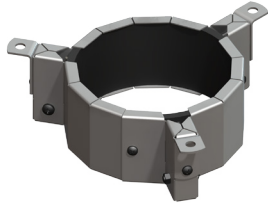
Product
SNAP 'R' Retro Fit Collars:
 LP50 - LP100R
 HP100R - HP250R
 32R - 110R

Situation
**Retrofit to concrete slab:
 Floorwaste and stack**



1

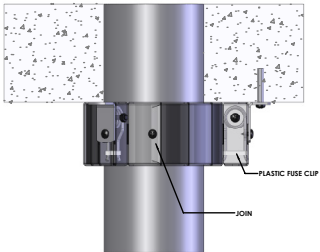
It is very important that the collar and intumescent are fitted the correct way up. Preferably the collar should be fitted before the pipe is fitted; this will obviate the need to fit the collar round the pipe, however this can easily be done provided the intumescent and mesh are replaced correctly. The folded mesh creates a pouch for the expanded intumescent preventing it from falling out of the collar.



2

1. For HP and LP collars, the collar must have the tails of the springs and the plastic fuse clip holding them together on the underside of the collar.
2. The minimum size of the sleeve anchors to be used is 6.5 x 35 long and they must be all steel. Plastic or aluminium pin anchors must NOT be used.

IMPORTANT The intumescent sleeve must not be altered or tampered with.



3

- Approved fixings:
- Steel Wedge Anchor 6x35mm
 - 6.5x40mm Mechanical Anchor
 - Mushroom Head Spikes
 - Concrete Screws

Installation instructions

Wall mount



The only Smoke and Fire Collar

SNAP Fire Systems Pty Ltd
 Building A, 1343 Wynnum Road
 Tingalpa QLD 4178
 Phone 1300 76 46 26
 Website www.snapcollars.com.au

Product

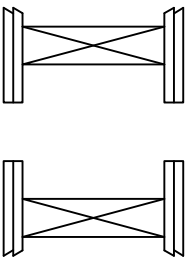
SNAP 'R' Retro Fit Collars:

LP50R - LP100R
 HP100R - HP250R
 32R - 110R

Situation

Retrofit to Plasterboard,
 Masonry or Concrete Wall

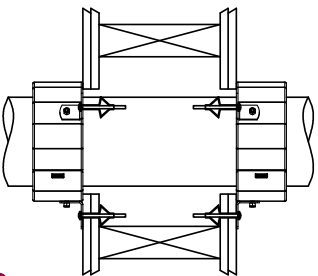
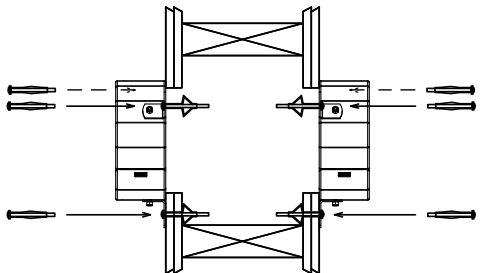
1



- I. Drill or Core a hole through wall.
- 2a. Preferably, install collar before installing pipe through penetration.
- 2b. Otherwise, slide/clasp collar onto pipe and fix to wall with approved fixing.

IMPORTANT The intumescent sleeve must not be altered or tampered with.

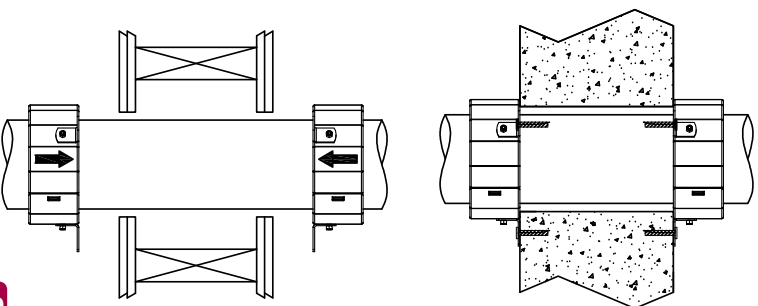
2a



Approved fixings:

- Plasterboard
- Hollow wall anchors
- 6mm Threaded bar
- Masonry
- 6x35mm Steel wedge anchor
- 6.5x40mm Dynabolt
- Hex screws
- Masonry, Block or Concrete Wall

2b



Wall mount

Installation instructions



The only Smoke and Fire Collar

SNAP Fire Systems Pty Ltd
 Building A, 1343 Wynnum Road
 Tingalpa QLD 4178
 Phone 1300 76 46 26
 Website www.snapcollars.com.au

Product

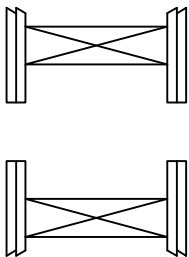
SNAP 'R' Retro Fit Collars:

LP50R - LP100R
 HP100R - HP250R
 32R - 110R

Situation

Retrofit to Plasterboard,
 Masonry or Concrete Wall

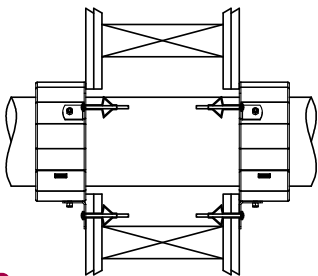
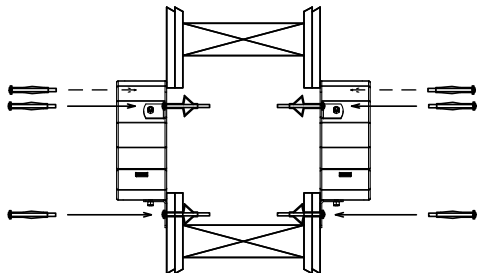
1



- I. Drill or Core a hole through wall.
- 2a. Preferably, install collar before installing pipe through penetration.
- 2b. Otherwise, slide/clasp collar onto pipe and fix to wall with approved fixing.

IMPORTANT The intumescent sleeve must not be altered or tampered with.

2a



Approved fixings:

- Plasterboard
- Hollow wall anchors
- 6mm Threaded bar
- Masonry
- 6x35mm Steel wedge anchor
- 6.5x40mm Dynabolt
- Hex screws
- Masonry, Block or Concrete Wall

2b

