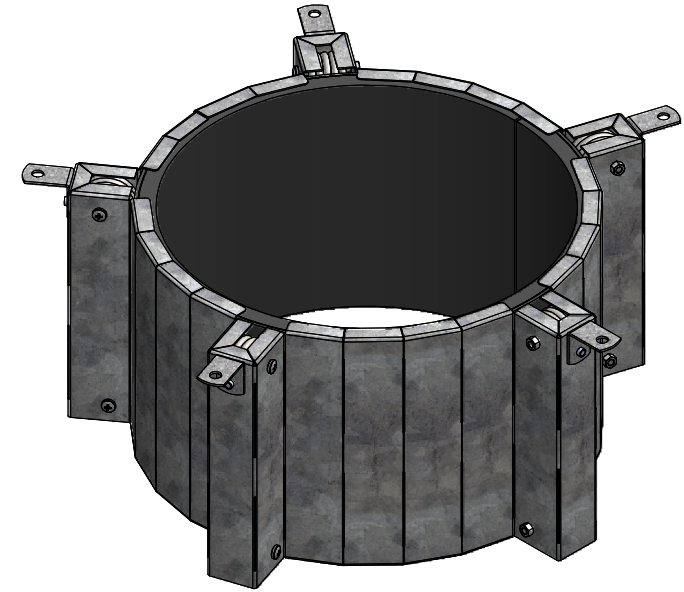
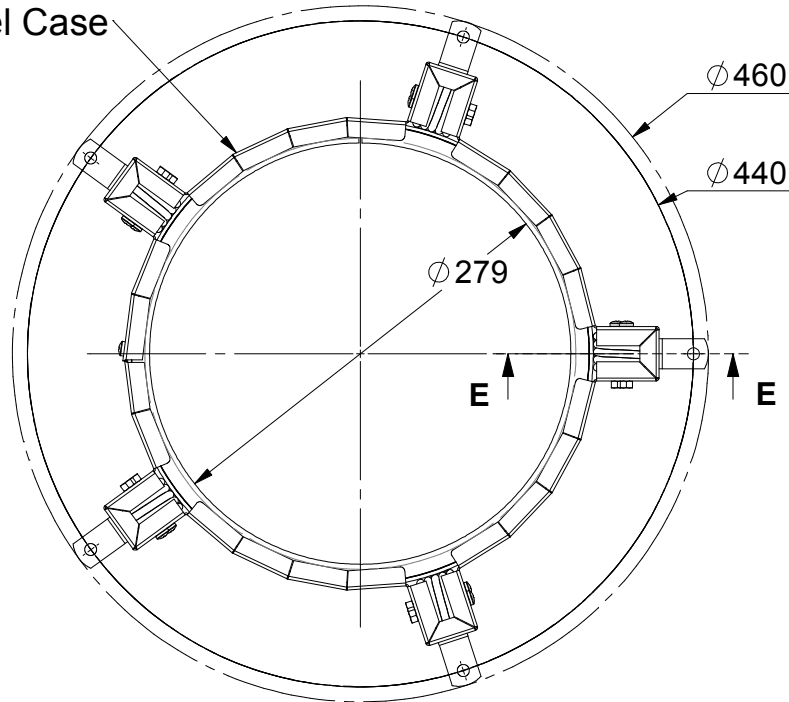


0.95 Steel Case



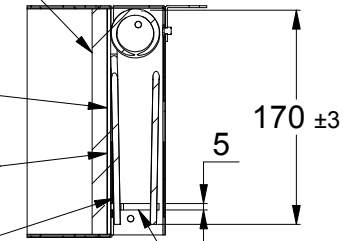
INTUMESH (PAT PENDING)

Intumescent-A
910 x 179 x 12mm Thick ± 0.5 mm

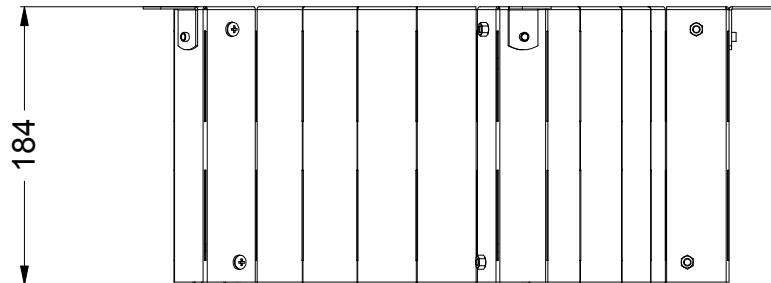
304 S/S Mesh
949 x 179mm
Wire $\phi 0.15$ mm 30 sq in

Intumescent-B
958 x 179 x 2.5mm Thick ± 0.5 mm

5 x 304 Stainless Steel
Springs
Wire $\phi 5$ mm



SECTION E-E Nylon Fuse Link



| | | |
|----------|---------------|----|
| | PRODUCT CODE: | |
| | HP250R | |
| DWG NO: | DATE: | |
| HP250R-T | 7/01/2015 | A4 |

UNLESS OTHERWISE SPECIFIED:
DIMENSIONS ARE IN MILLIMETERS
DO NOT SCALE DRAWING