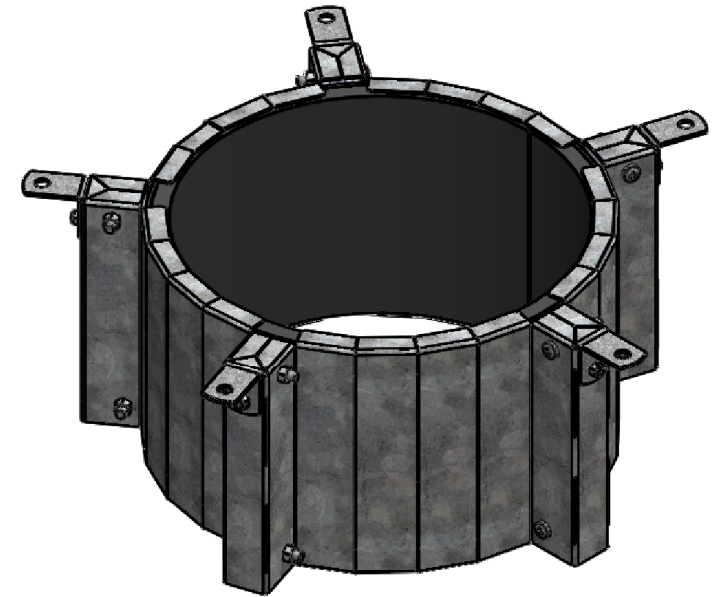
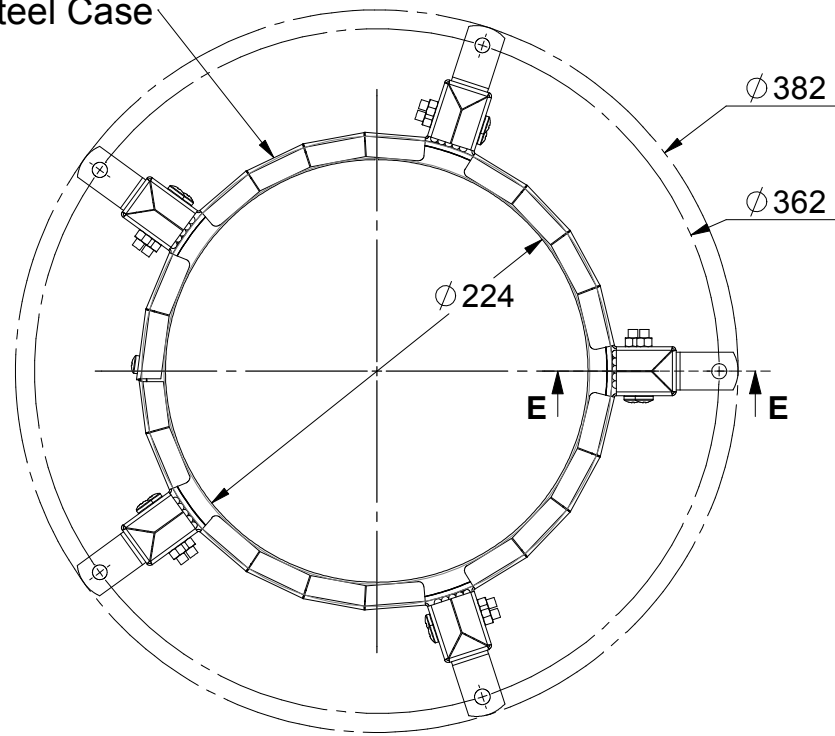


0.95 Steel Case



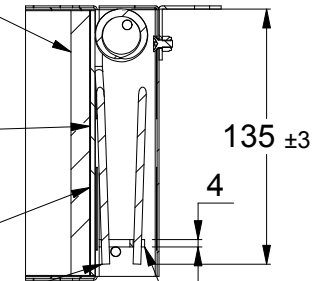
### INTUMESH (PAT PENDING)

Intumescent-A  
732 x 140 x 10mm Thick  $\pm 0.5$ mm

304 S/S Mesh  
764 x 140mm  
Wire  $\phi 0.15$  mm 30 sq in

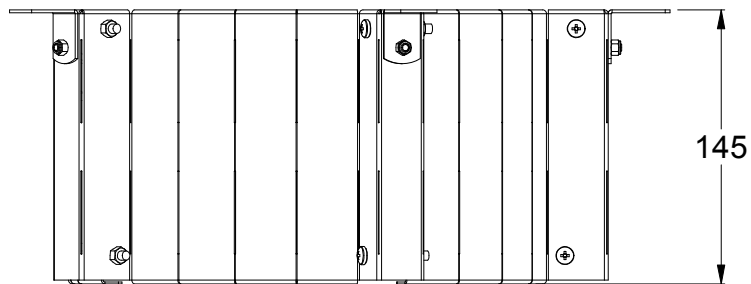
Intumescent-B  
772 x 140 x 2.5mm Thick  $\pm 0.5$ mm

5 x 304 Stainless Steel  
Springs  
Wire  $\phi 4.00$  mm



Nylon Fuse Link

### SECTION E-E



PRODUCT CODE:

**HP200R**



DWG NO:  
HP200R-T

DATE:  
3/11/2014

A4

UNLESS OTHERWISE SPECIFIED:  
DIMENSIONS ARE IN MILLIMETERS  
DO NOT SCALE DRAWING

ITEM NO.	PartNo	DESCRIPTION	HP200R/QTY.
1	LCT-HP200R	HP200R Laser Cut Blank	1
2	BLT-M5x35-PPH-ZP	M5x35 ZP Pan Phil Head Bolt	10
3	NUT-M5-ZP	M5 ZP CL4.6 Hex Nut	10
4	SPR-SSL-400-135	SPRING SS 4Dx135	5
5	FSL-400-PA66-CLR	Fuse Link 4mm	5
6	SCW-10Gx3/8	10Gx3/8 Screw	2
7	BKT-200-16	Series 2 20 x 1.6 mm Bracket	5
8	BLT-M4x10-CSNK-PH-ZP	M4x10 ZP CSNK Phil Head Bolt	5
9	NUT-M4-ZP-Nylock	M4 ZP Nylock	5
10		570.8x110x8	1
11			1
12			1